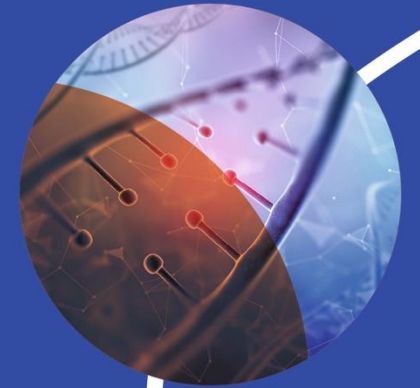




Innaxe

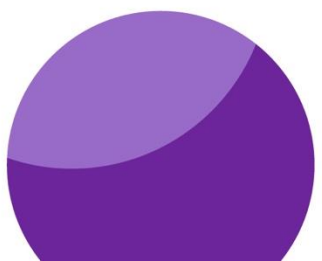
Inclusive and Aligned
Innovation Agendas
Across Europe



Partners



- Biocat- Fundació Bio Regio de Catalunya 
- Medicen Paris Region 
- BIORN Cluster Management GMBH 
- Health & Life Sciences Cluster Bulgaria 
- Danish Life Science Cluster 
- Council of European BioRegions 



Objectives



Strengthening connections :

- Enhance interconnections and efficiency within European Life Sciences and Health innovation ecosystems

Assessing impact :

- Produce a set of indicators to assess the impact of programs and services of clusters & develop a toolkit for impactful actions

Aligning strategies :

- Craft a joint long-term programme (Joint Action Plan) to overcome current fragmentation in innovation capacities

Fostering innovation :

- Boost innovation capacities to propel

Methodology

To enable ecosystem monitoring, benchmarking, and impact evaluation

- Definition of indicators for cluster benchmarking and monitoring
- Mapping of clusters activities in the EU
- Measuring impact of activities with logical framework

Goal

Activities

Indicators

Outcomes

Outputs

Methodology

Collaborative efforts
and stakeholder
engagement

91

Surveys
industry &
academia

79

**Cocreation
activities**
industry, academia,
policymakers & society

31

**Individual
meetings with
KOLs**
feedback & validation

Engaging with key stakeholders through surveys, interviews, and co-creation activities to integrate local ecosystem needs into our programme



Joint Action Plan

Acceleration of advanced therapies

Acceleration of MedTech and Digital Health

Access to health data

Cascade funding

Equality in health

International events

Matching innovators and investors

Public procurement and adoption of innovation

Ecosystem positioning and community building

Key Findings and Results

Identification of key common areas of action for consortium commitment for the next five years



Adaptable toolkit

Developed an **adaptable toolkit** to enable health & life science clusters to **monitor** and **assess** their activities effectively, focusing on engaging in **high-impact activities**

Data Collection

Collected **extensive data** on cluster challenges, activities & cluster actors (companies, research institutes, government, general public) & relevant **performance indicators**. Serves as a **valuable resource** for other research efforts within and beyond the life sciences sector.

Stakeholder Engagement

- Engaged a diverse range of **key stakeholders** (industry, academia, policymakers, associations) in working on our joint programme, ensuring the alignment with **ecosystem needs**
- Enhanced connections with our stakeholders laying the ground for support of our **future actions**

Key Findings and Results

Adaptable Toolkit, Data Insights, and Collaborative Impact

Strategic Impact through INNAXE's Approach

A United Path Forward
with the Joint
Programme

■ Ready-to-Execute Plan

The joint programme provides INNAXE partners with a tangible action plan, delineates clear, focused areas of action, hence, rallying the EU life sciences cluster community to address shared challenges through united efforts.

■ Strengthened Interregional Ties

By fostering interregional connections, the programme helps to amplify synergies, facilitating collaboration across borders.

Strategic Impact through INNAXE's Approach

INNAXE's value: why it matters!

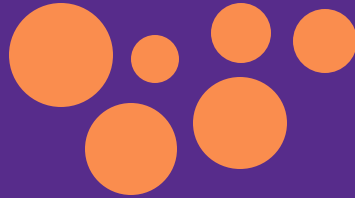


- **Facilitating Knowledge Exchange and Learning**
INNAXE enabled the sharing of challenges, best practices and identification of mutual interests across the European life sciences landscape.
- **Collective brainstorming** has led to the development of targeted actions, tools, and methodologies.
- The project has been **instrumental in enabling initiatives** that, without this collaboration, would not have been possible.

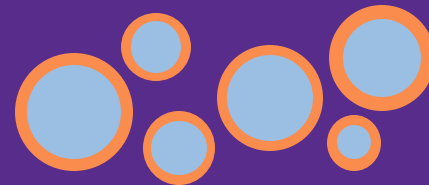
The enduring legacy of INNAXE: a sustainable plan

- **Continuing Journey**
The **INNAXE** project's **legacy** will persist through the joint programme, with the nine activities serving as a **springboard** for **future collaborations** for building cross-cluster cooperation projects with partners across Europe.
- **Prospective Developments**
Some activities may naturally conclude, while others may gain momentum and attract additional funding for **further development**.
Certain activities will be sustained by **partners' own investments**, underscoring their significance and commitment to ongoing collaboration.

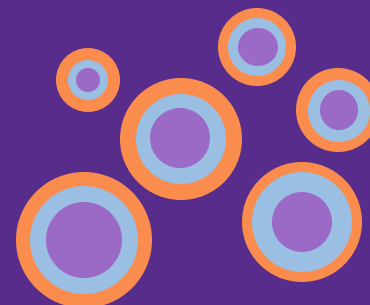
Analysing programmes
& services
and assessing
their impact in Life
Science Clusters
across Europe.



Verifying
relevance in the
ecosystems
surrounding the
Life Science
Clusters.



Creating alliance with
the cluster strategies
endorsement by
involving board of
directors.



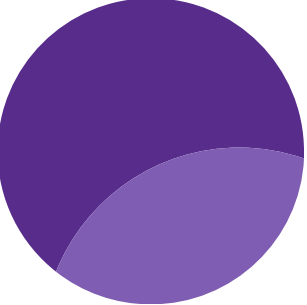
Our two-
year
journey



A journey started
in 2022...

A group of ten diverse people, five men and five women, are smiling and posing for a group photo. They are arranged in two rows: four people standing in the back and six people sitting or kneeling in the front. The background is a blue wall with a graphic design. The design includes a globe, a leaf, and the text "Inclusive Innovation Across the Globe" and "Innovation Agenda". The text "And the journey continues" is overlaid in white on the center of the image.

And the
journey continues



CONTACT US



Biocat, project's coordinator
Catalonia, Spain
Montse Daban, mdaban@biocat.cat
Núria Radó, nrado@biocat.cat
María Cejas, mcejass@biocat.cat

Medicen Paris Region
Ile-de-France region, Paris
Hickmah Tagaully, htagaully@medicen.org
Gaëlle Mouthon, gmouthon@medicen.org

BioRN Cluster Management GMBH
Rhine-Neckar, Germany
Friedemann Loos, fl@biorn.org

Health & Life Sciences Cluster BG
National level, Bulgaria
Kristina Eskenazi, kristina.eskenazi@biocluster.bg
Dimitrar Dimitrov, dimitar.dimitrov@biocluster.bg

Danish Life Science Cluster
National level, Denmark
Karen Lindegaard
karli@danishlifesciencecluster.dk

Council of European BioRegions
European level & Associated countries
Marta González, mgonzalez@cebr.net
Alberto Baldi, abaldi@cebr.net



Follow us on LinkedIn

@INNAXE

